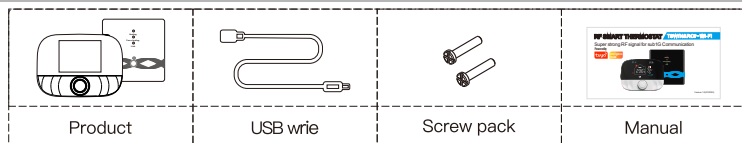


Desktop Type RF Smart Thermostat for wall-hung boiler

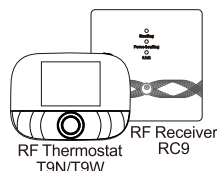
- ✓ The equipment function is stable and reliable, and the operation is simple and convenient
- ✓ The device has antifreeze function, child lock function and humidity function (only Wi-Fi model)
- ✓ Knob type control temperature setting is more convenient, flexible, and more experience
- ✓ Dual mode settings, operation can be set at will, comfortable Freedom and control of life
- ✓ RF transmitter desktop design, compatible with wall-mounted design, installation is very simple, flexible
- ✓ Relying on stable RF wireless technology, the thermostat is paired with the receiver, the signal is stable, and the pairing speed is fast



1. Standard Accessories



Product Overview



This set is suitable for wall-hung boiler temperature control. As long as you install the receiver RC9 device near the wall-hung boiler, even if the thermostat T9N/T9W is placed in the living room or room (with an open distance of 100 meters), the RC9 can be controlled by the T9N/T9W thermostat.

2. Product Overview

[RF Thermostat]

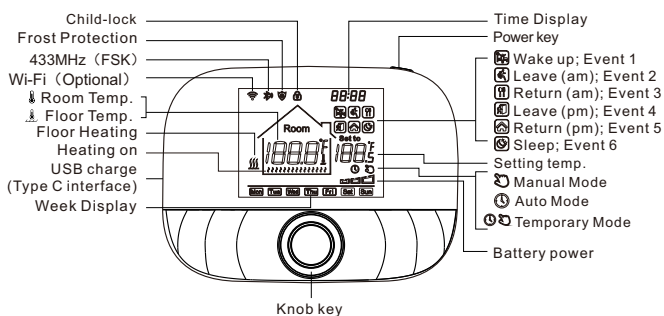
Power supply	2 x 1.5 V alkaline AA batteries / USB powered (Type C interface)
Temp. setting range	5~95°C
Ambient temperature	-5~50°C
Measurement accuracy	0.1°C
Setting temp. accuracy	0.5°C
Transmission distance	≤100m in the open air
Protection level	IP20
Wireless frequency	433MHz (FSK)

[RF Receiver]

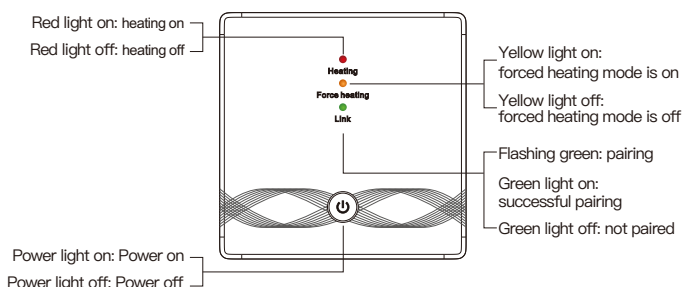
Power supply	AC100~240V; 50/60Hz
Device power consumption	1W Max
Ambient temperature	-5~50°C
Transmission distance	≤100m in the open air
Wireless frequency	433MHz (FSK)

3. Display Symbols

[RF Thermostat]



[RF Receiver]



4. User routine operations

[RF Thermostat]

Function	Steps
Power on/off	Press "power key" shortly to turn on/off the thermostat.
Auto-mode	Press "knob key" for 3 seconds to edit auto-mode settings.
Temp. control mode	Press "knob key" shortly to switch manual/auto mode.
Temp. setting	Rotate "knob key" to change setting temperature by 0.5°C.
Child-lock	Press "knob key" + "power key" for 3 seconds to activate child-lock.
Time setting	Press "power key" for 3 seconds to set time.
Backlight Control	Press "power key" + "power key" for 3 seconds to pairing mode.
Pairing mode	Under power-off, press "knob key" + "power key" for 3 seconds to pairing mode.
Wi-Fi setting	Under power-off, press "power key" for 3 seconds to Wi-Fi setting.
Low power reminder	When the voltage is less than 2.3 V, the small icon of battery power flickers, it is recommended to replace the new battery as soon as possible before use.

5. Auto-mode Setting

Press "knob key" for 3 seconds to edit auto-mode setting.

Events	1	Symbols	Time		Temperature	
			Default value	Modify	Default value	Modify
Workdays	2	[Symbol]	06:00	Rotate knob	20°C (68°F)	Rotate knob
	3	[Symbol]	08:00		15°C (59°F)	
	4	[Symbol]	11:30		15°C (59°F)	
	5	[Symbol]	12:30		15°C (59°F)	
	6	[Symbol]	17:00		22°C (72°F)	
	1	[Symbol]	22:00		15°C (59°F)	
Weekends	2	[Symbol]	08:00	20°C (68°F)		
	1	[Symbol]	22:00	15°C (59°F)		

6. RF Thermostat advanced setting (Usually for Professional Technicians)

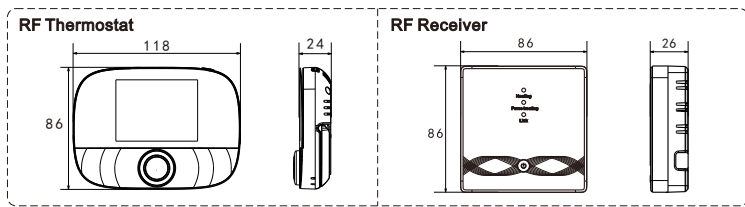
Under power-off, press "Knob key" for 3 seconds to enter advanced setting mode, then repress "Knob key" to switch to next mode. Press "power button" to save and exit advanced setting mode.

Code	Meaning	Knob key "⊙"	Default value
01	Temp. calibration	-9.9~9.9°C(-9~9°F)	-1°C
02	Temp. Dif.	0.5~10°C(1~10°F)	±1°C
03	Temp. upper limit	5~95°C(41~199°F)	50°C
04	Temp. lower limit	5~47°C(41~117°F)	5°C
05	Frost protection	ON: frost protection on OFF: frost protection off	OFF
06	Temperature unit	°C/°F	°C
09	Weekly programming setting	12345: 5/2 week mode 123456: 6/1 week mode 1234567: 7/0 week mode	12345
12	Child-lock	00: Child-lock inactivate when screen off; lock all when child-lock activate 01: Child-lock activate when screen off; lock all when child-lock activate 02: Child-lock activate when screen off; lock all except Fan Speed, Up and Down when child-lock activate 03: Child-lock activate when screen off; lock all except Power on/off when child-lock activate	00
13	Power-on-reset	00: Power OFF 01: Power ON 02: The last status before power loss	02
19	Reset	Press "⊙" for 3 seconds to reset	/

7. RF Receiver operating instructions

Function	Steps	Display state
Power on/off	Press "⊙" shortly	Power light is always on/off
Pairing	Under power-off, press "⊙" for 3 seconds	"●" Green flashes quickly
Distribution network is successful		Buzzer beeps + "⊙" light is on + "●" green light is on
Forced output	Under power-off, Double click the "⊙"	"●" Red light on + "●" yellow light on
	Short press "⊙" to exit the forced output and return to the shutdown state	The "⊙" light goes out
Reset	Under power-off, press "⊙" for 3 seconds, After the green light flashes "●", double-click the press "⊙" again	"●●●" lights flash once at the same time
External probe temperature limit temp setting	When powered on, press "⊙" for 3 seconds	"⊙" Power light flashes (No temperature limit, Default value)
	When the power light is flashing, short press "⊙" once	"⊙" Power light is flashing + "●" green light is on(30°C temperature limit)
	When the power light is flashing, short press "⊙" twice	"⊙" Power light is flashing + "●" yellow light is on(40°C temperature limit)
	When the power light is flashing, short three times press "⊙"	"⊙" Power light is flashing + "●" red light is on(55°C temperature limit)
	When the power light is flashing, Long press "⊙" for 3 seconds	Save and exit External sensor temperature limit temperature setting

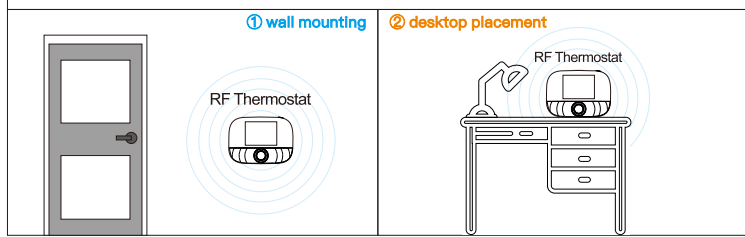
8. Dimensions (Unit: mm)



9. Installation location

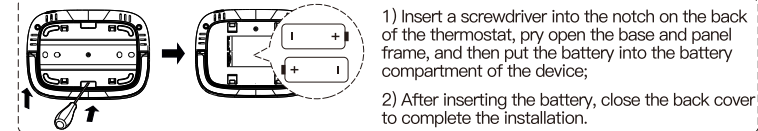
The installation distance between the thermostat and the receiver does not exceed 100m (the distance can be judged according to the actual network coverage)

Tip: There are many ways to install the RF thermostat, ① wall mounting ② desktop placement

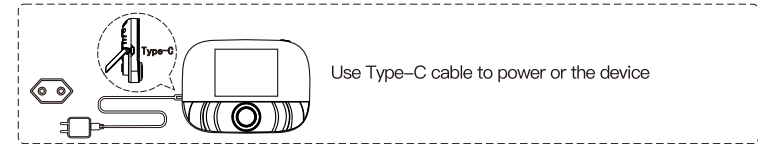


10. RF Thermostat mounting steps.* Note: two power supply methods

① 2 x 5 Alkalibatterien * **Note:** ① It is recommended to use brand new 1.5 V alkaline AA batteries. ② Please ensure the correct polarity when installing the battery.

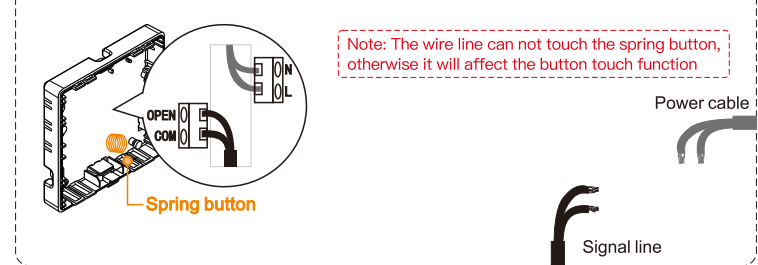


② USB powered (Type C interface)

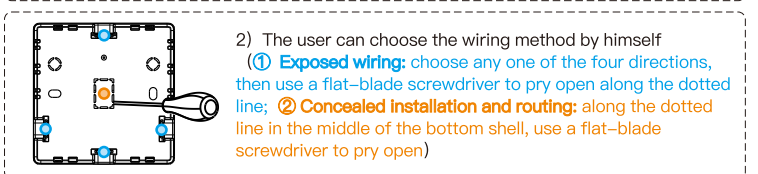
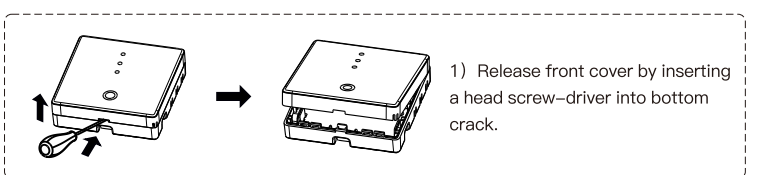


11. RF Thermostat installation steps

3) Put the wire into the terminal and tighten it with a flat-blade screwdriver. After tightening the terminal screws, cover the upper cover to complete the installation.

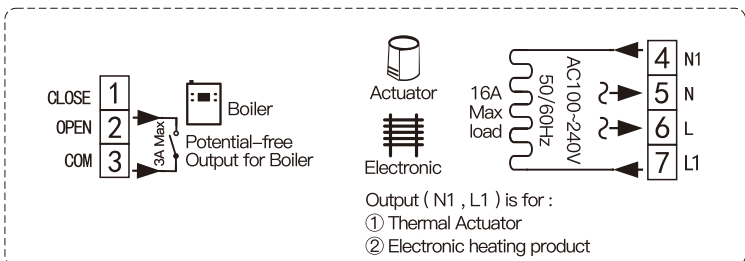


12. RF Thermostat installation steps



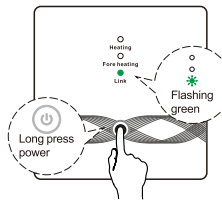
13. RF Receiver wiring diagram

The thermostat operates in full capacity in areas with the altitude of less than 2500 above sea level. Power rating of external load should be less than or equal to 80% rated power of the thermostat in areas with altitude of 2500m to 4200m.

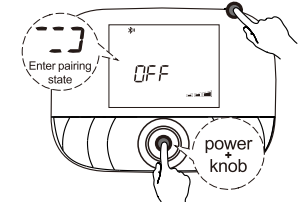


14. Pairing steps

① Under power-off, press “power button” for 3 seconds, when the green light “Flashing green” flashes, the receiver enters the pairing state.

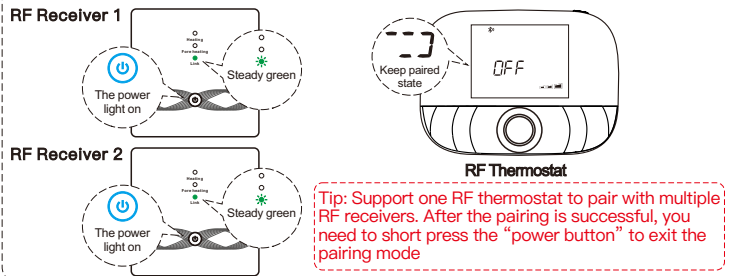


② Under power-off, press “power button” + “knob key” for 3 seconds, the thermostat enters the pairing state.



15. Pairing steps

③ When the receiver's buzzer beeps once, and the power light “power” + the green light “Flashing green” are always on, the pairing is successful.



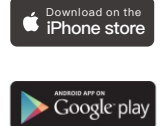
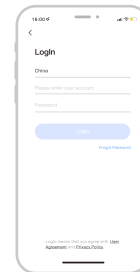
16. Function Introduction (Wi-Fi only)

APP remote control and voice control



17. Network Configuration (Wi-Fi only)

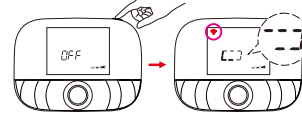
Download Smart Life APP



Scan the QR code above or search “Smart Life” on App Store and Google Play to download the Smart Life APP.

18. Wi-Fi setting (Wi-Fi only)

① In the OFF state, long press the “power button” for 3 seconds, when the screen flashes “Wi-Fi”, the thermostat enters the state of distribution network;



② Enter the “Home” interface of the APP, click “+” in the upper right corner, select the “Go to add” button in the pop-up window, and finally click “+” to enter the Wi-Fi password interface;

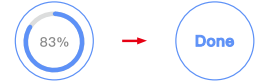


*Please turn on the Bluetooth of your phone in advance.

③ Select 2.4G Wi-Fi and enter the password, click “Confirm”, and then wait for the connection to succeed;



④ After the addition is successful, click “Done”, and the RF thermostat has been added successfully.



19. Voice control (Wi-Fi only)

After waking up the speaker, you can say:

Amazon Alexa : Alexa,

- * Turn on the HEATER
- * Turn off the HEATER.
- * Make the HEATER cooler in here.
- * Make the HEATER warmer in here.
- * What is the temperature of the HEATER?
- * Turn on child lock for the HEATER
- * Turn off child lock for the HEATER

Google Assistant : OK google,

- * Turn on the HEATER
- * Turn off the HEATER.
- * Set the HEATER to 26 degree
- * Drop the HEATER by 1 degree
- * Raise the HEATER by 1 degree
- * Turn on child lock for the HEATER
- * Turn off child lock for the HEATER

***Attention:** “HEATER” is the device name, you can also name it yourself. The temperature unit of thermostat and smart speaker must be identical.